

Δημήτρης Συκιάς

Θέματα Κατατακτηρίων Εξετάσεων
Τρίφωνες Συγχορδίες - Δεσπόζουσα μεθ' εβδόμης

2009

I. Μελωδίες Κατατακτηρίων Εξετάσεων

Τρίφωνες Συγχορδίες - Δεσπόζουσα μεθ' εβδόμης

Τα παρακάτω θέματα να λυθούν με χρήση τριφώνων κυρίων και δευτερευουσών συγχορδιών, δεσπόζουσας με 7, χωρίς αρμονικές αλυσίδες και ξένους φθόγγους.

1. **Allegretto** Δ. Συκιάς

2. Κ. Κλάββας

3. Ν. Παναγιωτάκης

4. **Moderato** Δ. Συκιάς

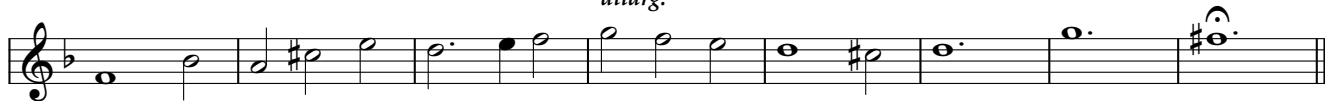
Ω

Religioso

Δ. Συκιάς

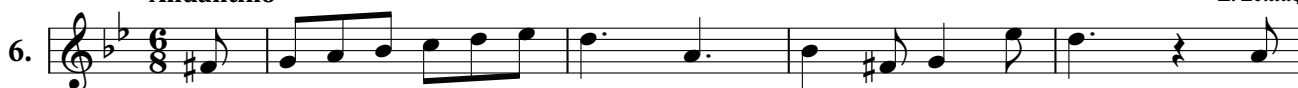


allarg.



Andantino

Δ. Συκιάς



rit.



Giocoso

tempo

Δ. Συκιάς



meno mosso

tempo

rit.



II. Βάσιμα Κατατακτηρίων Εξετάσεων

Τρίφωνες Συγχορδίες - Δεσπόζουσα μεθ' εβδόμης

Δ. Συκιάς

1. 



Κ. Κλάββας

2. 




Κ. Κλάββας

3. 



Δ. Συκιάς

4. 



Δ. Συκιάς

5. Musical notation for exercise 5, first staff. Bass clef, key signature of two sharps (F# and C#), 4/4 time signature. The staff contains a sequence of notes with a slur over the first four notes. Fingering numbers are written below the notes: 8, 2, 6, 6, 2, 6, 6, 6, 6, 7, 6, 5, 5, 6, 6, 5.

Musical notation for exercise 5, second staff. Bass clef, key signature of two sharps. The staff contains a sequence of notes with a slur over the last three notes. Fingering numbers are written below the notes: 5, 6, 5, 7, 6, 2, 6, 6, 5, 7, 5, 6, 6, 4.

Δ. Συκιάς

6. Musical notation for exercise 6, first staff. Bass clef, key signature of one flat (F), 3/4 time signature. The staff contains a sequence of notes with a sharp sign above the second note. Fingering numbers are written below the notes: 8, 6, #, 7, 6, 6, 6, #, 4#, 6, 6#.

Musical notation for exercise 6, second staff. Bass clef, key signature of one flat. The staff contains a sequence of notes with a sharp sign above the second note. Fingering numbers are written below the notes: 6, #, 6, 5, 6, 5, 5#, 5, 6, 6, 6, #, 7, #.

Δ. Συκιάς

7. Musical notation for exercise 7, first staff. Bass clef, key signature of three sharps (F#, C#, G#), 4/4 time signature. The staff contains a sequence of notes with a sharp sign above the second note. Fingering numbers are written below the notes: 8, #, #, #, #, #, #, #, #, #, #, #, #, #, #, #.

Musical notation for exercise 7, second staff. Bass clef, key signature of three sharps. The staff contains a sequence of notes with a sharp sign above the second note. Fingering numbers are written below the notes: 8, #, #, #, #, #, #, #, #, #, #, #, #, #, #, #.

N. Παναγιωτάκης

8. Musical notation for exercise 8, first staff. Bass clef, key signature of one flat, 4/4 time signature. The staff contains a sequence of notes with a slur over the last four notes. Fingering numbers are written below the notes: 4, 6, 2, 6, 6, 6, 6, 6, 5, 6, 5, 7, 5, 5, 5, 2, 6, 6.

Musical notation for exercise 8, second staff. Bass clef, key signature of one flat. The staff contains a sequence of notes with a slur over the last four notes. Fingering numbers are written below the notes: 6, 2, 6, 6, 6, 6, 6, 6, 5, 6, 6, 7, 5, 6, 5.

Δ. Συκιάς

9. Musical notation for exercise 9, first staff. Bass clef, key signature of two sharps, 3/2 time signature. The staff contains a sequence of notes with a sharp sign above the second note. Fingering numbers are written below the notes: 8, #, #, #, #, #, #, #, #, #, #, #, #, #, #, #.

Musical notation for exercise 9, second staff. Bass clef, key signature of two sharps. The staff contains a sequence of notes with a sharp sign above the second note. Fingering numbers are written below the notes: 8, #, #, #, #, #, #, #, #, #, #, #, #, #, #, #.